

TEAM Dore

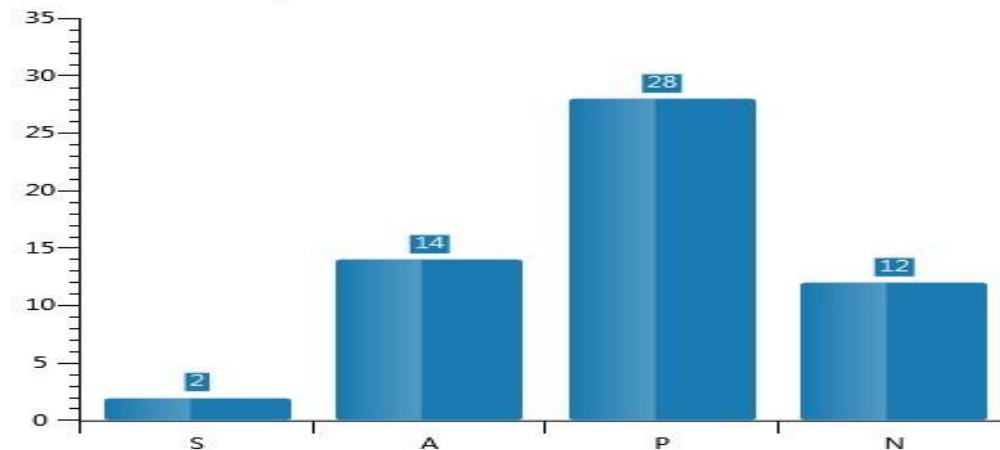
REPORT ON SEN PROVISION & PROGRESS

SENCO: _____ Jason Fletcher _____ Date: _____ March 2014 _____

1. SEN Register update

Student by SEN Status

A count of students with special educational need status



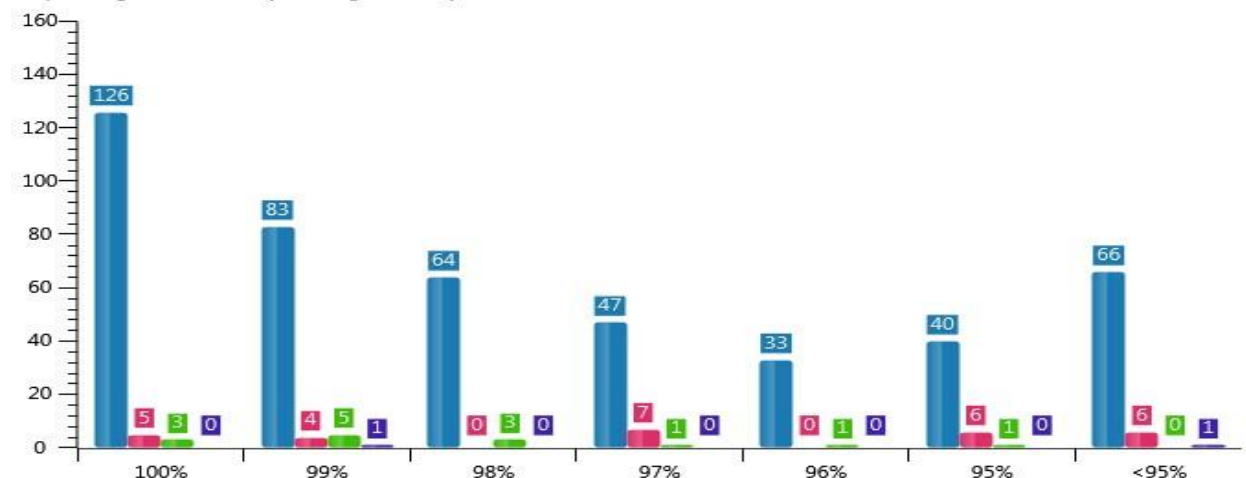
Total number of children currently on SEN register is 44. 14 children at SA is up from May last year by 4 and SA+ at 28 is down by 2.

There have been two children who have been statutory assessed and received a *note in lieu*.

2. Attendance

Percentage Session Attendance Year To Date

The percentage of attendance by session (year to date)



7 children with SEN have attendance below 95%. The average attendance for the groups are as follows: SA = 98.5%, SA+ = 96%.

3. In Year Progress form Autumn 13 – Spring 2014

School Progress By Selected Group From Aut TA 2013 to Spr TA 2014

Progress colouring may be affected by rounding.

All Years, On SEN Register = Y (36 pupils)																	
NC Year Now	Pupils	Reading				Writing				Maths				APS			
		APS		Expected		APS		Expected		APS		Expected		APS		Expected	
		Gp	Nat	No.	%	Gp	Nat	No.	%	Gp	Nat	No.	%	Gp	Nat	No.	%
1	6	1.5	1.7	2	40%	1.3	1.7	2	40%	2.7	1.7	5	100%	1.9	1.7	3	60%
2	5	1.0	1.7	1	25%	2.3	1.7	4	100%	2.5	1.7	4	100%	1.9	1.7	3	75%
3	5	1.2	1.1	3	60%	1.4	1.1	4	80%	2.0	1.1	5	100%	1.5	1.1	4	80%
4	7	1.9	1.1	7	100%	1.4	1.1	5	71%	0.9	1.1	5	71%	1.4	1.1	6	86%
5	8	3.0	1.1	5	63%	2.1	1.1	7	88%	0.9	1.1	3	38%	2.0	1.1	6	75%
6	5	2.0	1.1	4	80%	2.0	1.1	3	60%	1.2	1.1	2	40%	1.7	1.1	3	60%

Progress v typical - all groups compared with overall national average

Outstanding >1 above
 Good > 0.5 above
 Typical within range
 < typical >0.3 below

Note: Individual pupil progress is matched to rounded national data so that the tracker is consistent throughout with progress analysis. This may produce slightly different

The **in year** data grid above illustrates progress made by SEN as a group between November 8th and March 7th.

The data illustrates that children with SEN in our school are making typical progress in years 1-4 with an average APS above national. In years 5 and 6 the children are making good progress with an average APS well above national.

Each child within these SEN groups has intervention work recorded in Class SEN Green Folders as well as electronically on the tracker. The data does suggest less than expected progress by some children in Y1 and Y2 and in reading and writing. Further more detailed scrutiny of the children's progress data identifies exactly who this is and what is being done for them in terms of intervention. The Inclusion leader will also use this information when discussing pupil progress concerns with the teachers.

Year 1

Pupils	Reading								Writing								Maths									
	Group progress = 1.5 APS / Group typical = 1.9								Group progress = 1.3 APS / Group typical = 1.9								Group progress = 2.7 APS / Group typical = 1.9									
	Start		1		2		End		Start		1		2		End		Start		1		2		3		End	
Name (SEN), Pupil Premium & % Attendance	Lev	APS	Lev	APS	Lev	APS	Prog	Lev	APS	Lev	APS	Prog	Lev	APS	Prog	Lev	APS	Lev	APS	Lev	APS	Prog	Lev	APS	Prog	
N	99.1	M ELG	5.3			E ELG	6.5	1.2	E ELG	6.5			1c/1b	8	1.5	M ELG	5.3			1b	9	3.7				
Y	100	ND	ND			E ELG	6.5	-	ND	ND			D 40-60	4.4	-	ND	ND			1c	7	-				
N	99.1	1c	7			1c	7	0	1c	7			1b	9	2	1c	7			1b/1a	10	3				
N	91.4	1b	9			2c	13	4	1c	7			1c	7	0	1c	7			1b	9	2				
N	100	E ELG	6.5			1c	7	0.5	E ELG	6.5			1c	7	0.5	1c	7			1b	9	2				
N	95.5	1c	7			1b	9	2	E ELG	6.5			1b	9	2.5	1c	7			1b/1a	10	3				

Interventions for children not making progress in reading and writing include:

Speech & Language 1:1

Handwriting

Reading 1:1

Early Literacy Support

Year 2

Pupils	Reading								Writing								Maths										
	Group progress = 1 APS / Group typical = 1.9								Group progress = 2.3 APS / Group typical = 1.9								Group progress = 2.5 APS / Group typical = 1.9										
	Start		1		2		End		Start		1		2		3		End		Start		1		2		3		End
Name (SEN), Pupil Premium & % Attendance	Lev	APS	Lev	APS	Lev	APS	Prog	Lev	APS	Lev	APS	Prog	Lev	APS	Prog	Lev	APS	Lev	APS	Lev	APS	Prog	Lev	APS	Prog		
N	88.8	2c	13			2c	13	0	1a/2c	12			2c/2b	14	2	1a	11			2c	13	2					
N	97.7	2a	17			3c	19	2	1a	11			2c	13	2	1a/2c	12			2b	15	3					
Y	100	ND	ND			1c	7	-	ND	ND			1c	7	-	ND	ND			1a	11	-					
N	99.1	1a	11			1a/2c	12	1	1a	11			2c	13	2	1a/2c	12			2b	15	3					
Y	97.3	P8	6			1c	7	1	P8	6			1b	9	3	1c/1b	8			1b/1a	10	2					

Interventions for child not making progress in reading:

Speech & Language 1:1

Spelling Zappers

Reading 1:1

4. Intervention & costs

GROUP INFANTS	APPROXIMATE SPEND AND INTERVENTION TYPE	IMPACT ON PROGRESS AUTUMN 13 - SPRING 14
Rec = 8	Phonics - £1920 TA Focus 1:1 – Scissor, writing, reading 2 hours daily - £5760 1:1 Individual Level 3 - £7000 VIP - £200 Other speech intervention £320 TOTAL = £15,200	
YR1 = 6	1:1 Reading 2 x week - £200 Phonics - £1440 TA Focus 1:1 £2160 ELS - £60 Speech intervention £360 TOTAL = £4220	1.9 APS compared to 1.7
YR2 = 5	Phonics group £1200 Reading 1:1 £360 TA Focus 1:1 £2160 TA 1:1 £6000 Spelling Zappers £360 Project X = £1500 TOTAL = £11,580	1.9 APS compared to 1.7 National
GROUP JUNIORS YR3 = 5	Phonics/Spelling x 5 = £1200 TA Focus support 6 hours = £2160 Rainbow reading x 5 = £1000 Daily Readers x = £1800 Springboard maths = £300 TOTAL = £6460	1.5 APS compared to 1.1 National
YR4 = 7	ABI inset x 2 = £400 1:1 support £7000 Targeted support -£2496 Phonics/Spelling X 7 = £1680 ICT support - £400 Speech Intervention - £360 Writing Group - £200 Spelling zappers - £50 TOTAL = £12,586	1.4 APS compared to 1.1 National
YR5 = 8	1:1 readers x 8 = £400 Spelling zappers – x 8 = £400 1:1 Lit/num = summer Phonics/Spellings x8 = £1920 TA Focus support = £1800 TA 1:1 support - £12600 TOTAL = £17120	2.0 APS compared to 1.1 National (Good)
YR6 = 5	English comprehension - £180 Maths 1:1 - £40 x 6 = £240 x 5 = £1200 Eng 1:1 - £40 x 6 = £240 x 5 = £1200 Boosters - £133 x 5 = £665 TA Focus support = £720 Maths Focus Group = £360 TOTAL = £4325	1.7 APS compared to 1.1 National (Good)
<ul style="list-style-type: none"> • Group intervention costs calculated proportionally • Average teacher pay and cover taken from Jim Knight (2008) DfES • Average TA pay taken from National Salary Data • 10 hours of TA level 1 salary as informed by Mary Collins (Ed Psych) • All costs and times rounded down and any approximations are low. 		